



eCotton Product Documentation

GIN System

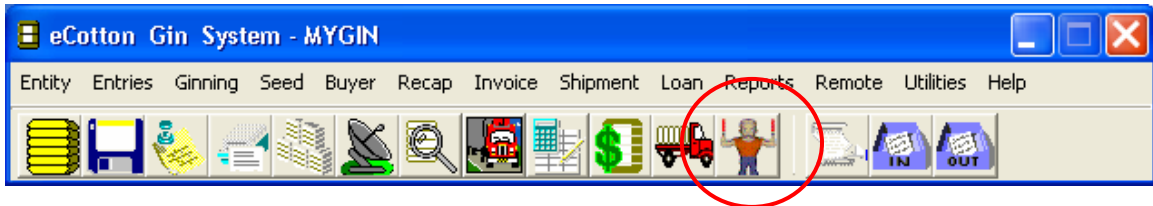
Bale Director

Table of Contents

Bale Director Icon.....	3
Bale Director Screen.....	3
Expand level of detail.....	3
Ying-Yang	4
Processed/Not Processed	4
Function Buttons	4
Select Recap Type	5
Example: Create Recap	5
Example: Create Loan	5
Transfer Landlord Ownership	6
Landlord, Landlord Group, Producer Setup	7

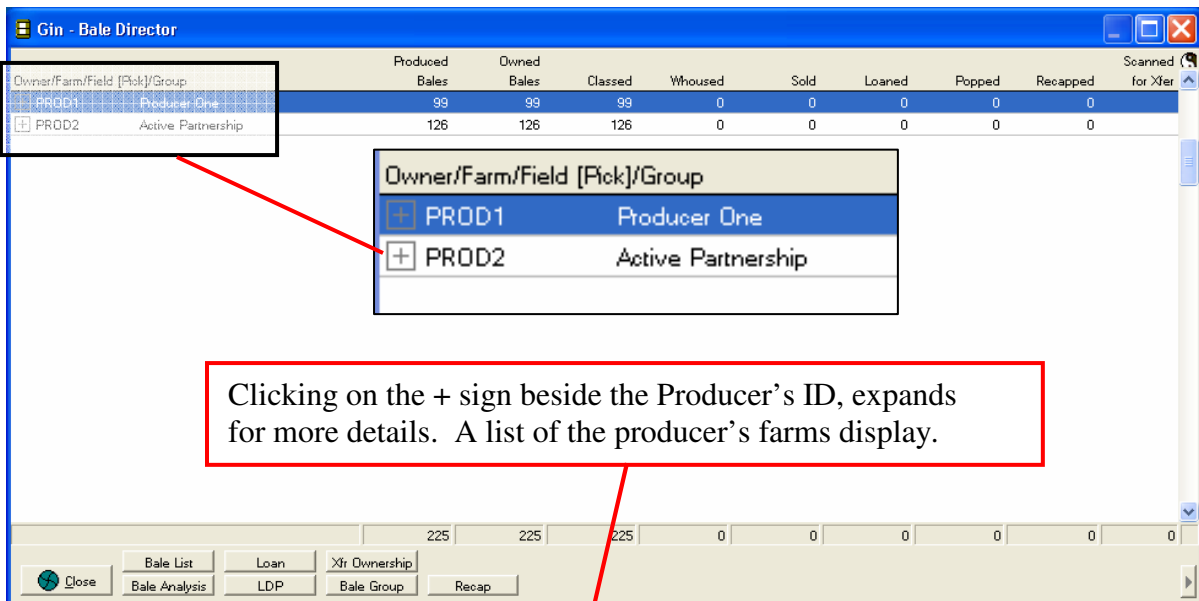
Bale Director

As it's name implies, this GIN function allows you to 'direct' bales. Clicking on the Bale Director icon, displays a list of all producers and their year-to-date bale totals.



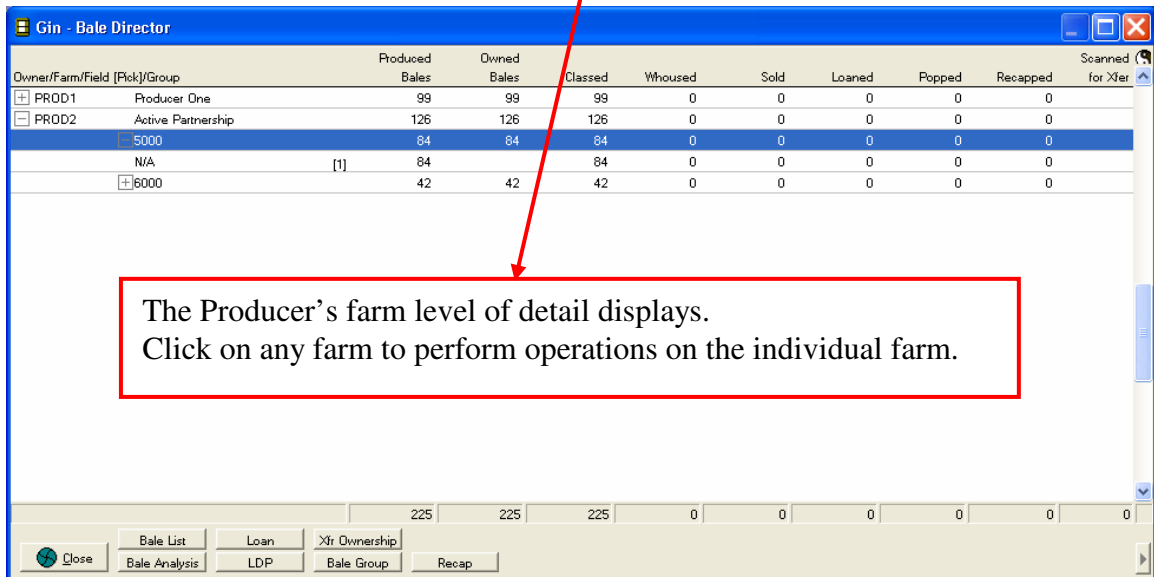
Note: Loads must be posted before the bale data appears in bale director.

The Bale Director Screen



Owner/Farm/Field [Pick]/Group	Produced Bales	Owned Bales	Classed	Whoused	Sold	Loaned	Popped	Recapped	Scanned for Xfer
PROD1	99	99	99	0	0	0	0	0	
PROD2 Active Partnership	126	126	126	0	0	0	0	0	

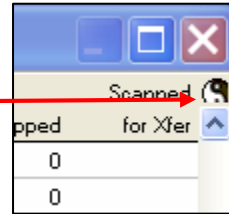
Clicking on the + sign beside the Producer's ID, expands for more details. A list of the producer's farms display.



Owner/Farm/Field [Pick]/Group	Produced Bales	Owned Bales	Classed	Whoused	Sold	Loaned	Popped	Recapped	Scanned for Xfer
PROD1 Producer One	99	99	99	0	0	0	0	0	
PROD2 Active Partnership	126	126	126	0	0	0	0	0	
5000	84	84	84	0	0	0	0	0	
N/A [1]	84	84	84	0	0	0	0	0	
6000	42	42	42	0	0	0	0	0	

The Producer's farm level of detail displays. Click on any farm to perform operations on the individual farm.

By clicking on the 'ying-yang' symbol, the columns identify what activity has **not** be done with the bale. See the bale director panel example below.



Gin - Bale Director

Owner/Farm/Field [Pick]/Group	Produced Bales	Owned Bales	Not Classed	Not Whoused	Not Sold	Not Loan/LDP	Not Recapped	No Scanned for Xfer
PROD1 Producer One	99	99		99	99		99	
PROD2 Active Partnership	126	126		126	126		126	
5000	84	84		84	84		84	
N/A [1]	84		-84		84		84	
6000	42	42		42	42		42	
	225	225	0	225	225	0	225	0

Buttons: Close, Bale List, Loan, Xfr Ownership, Bale Analysis, LDP, Bale Group, Recap

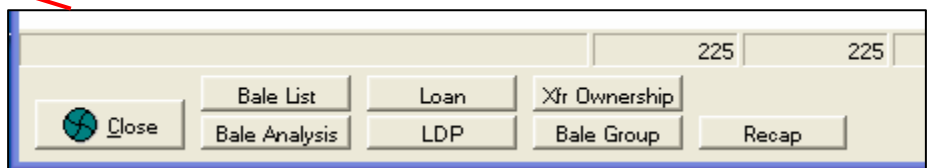
The columns of data identify activity for the bale.

Gin - Bale Director

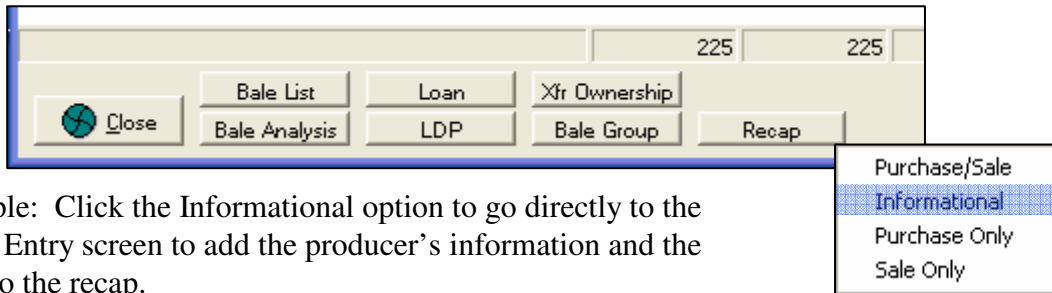
Owner/Farm/Field [Pick]/Group	Produced Bales	Owned Bales	Classed	Whoused	Sold	Loaned	Popped	Recapped	Scanned for Xfer
PROD1 Producer One	99	99	99	0	0	0	0	0	0
PROD2 Active Partnership	126	126	126	0	0	0	0	0	0
5000	84	84	84	0	0	0	0	0	0
N/A [1]	84		84	0	0	0	0	0	0
6000	42	42	42	0	0	0	0	0	0
	225	225	225	0	0	0	0	0	0

Buttons: Close, Bale List, Loan, Xfr Ownership, Bale Analysis, LDP, Bale Group, Recap

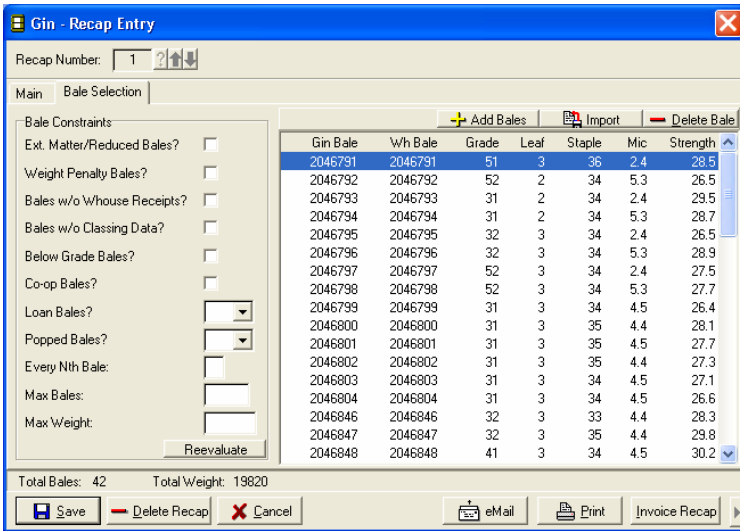
Select a farm. Any of the GIN functions on the buttons can be performed for the farm.



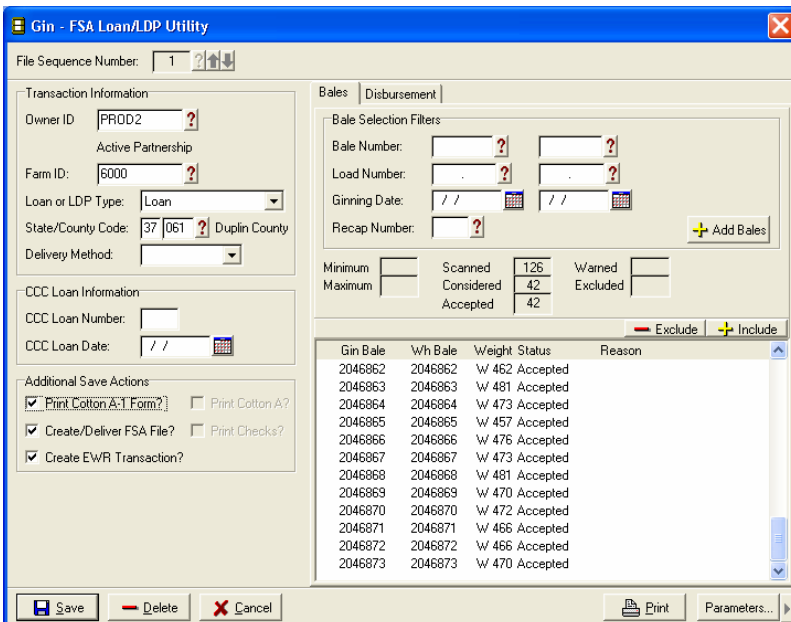
With the farm highlighted, click on any button. Click the Recap button to choose which type of Recap to create.



Example: Click the Informational option to go directly to the Recap Entry screen to add the producer's information and the bales to the recap.



Or, click the Loan button to go directly to the Loan/LDP utility.



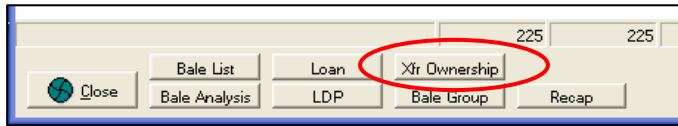
Click on any of the buttons to perform the GIN function described on the button.

Obviously, bale data records must be valid in order to perform certain functions ie; the bales cannot be put on a recap without classing data.

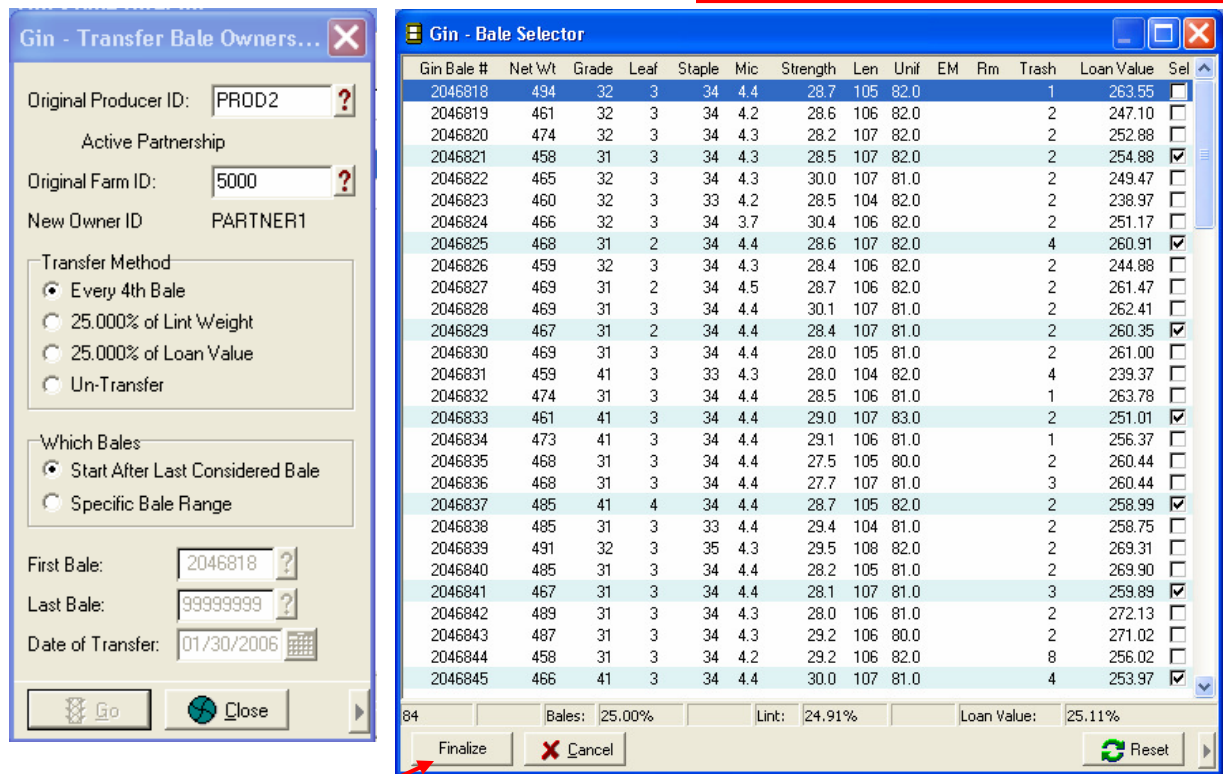
Transfer Landlord Ownership

Landlords and landlord groups must be set up and include a transfer method. Insert the landlord group ID on the farm screen of the producer's record. The landlord group id must also be set up as a producer with the same farm name as the original producer.

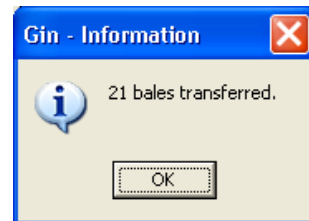
In bale director, click on the farm for the desired producer and click on the Xfr. Ownership button.



The example below illustrates a landlord transfer of every 4th bale. That equates to 25%. The transferred bales are highlighted on the bale selector screen.



Click on finalize to transfer ownership of the landlord's bales.



When the bales are transferred, an owner entry is added to the bale director screen. This creates an owner as the landlord and identifies the number of bales.

Owner/Farm/Field (Pick)/Group	Produced Bales	Owned Bales	Not Classed	Not Whoused	Not Sold	Not Loan/LDP	Not Recapped	Not Scanned for Xfer	
PARTNER1 Landlord Partner		21			21	21	21		
PROD1 Producer One	99	99			99	99	99		
PROD2 Active Partnership	126	105			105	105	105	42	
5000	84	63			63	63	63		
6000	42	42			42	42	42	42	
		225	225	0	0	225	225	225	42

In summary, producer PROD2 has a farm, 5000, that is partly owned by a landlord, PARTNER1. PARTNER1 is both the name of the landlord and the group. The landlord group has established that every 4th bale be transferred to the landlord (25%). When PROD2 is set up, the landlord group ID of PARTNER1 is entered on the farm 5000 screen.

PARTNER1 is set up as a producer in the Producer Entry screen. This producer id also set up with farm 5000. Do not enter any group ID on this farm screen.

Producer ID	Farm Number	Landlord ID	Landlord Grp.
PROD2	5000		PARTNER1 (Set up with transfer method identified and entered on PROD2's farm screen). (Can also include distribution of ginning charges, seed credit, etc.)
PARTNER1	5000	PARTNER1 (member as PARTNER1 of landlord group ID, PARTNER1.)	